

## Single Family Residences

### Calendar Year

### Population 2000 - 1149

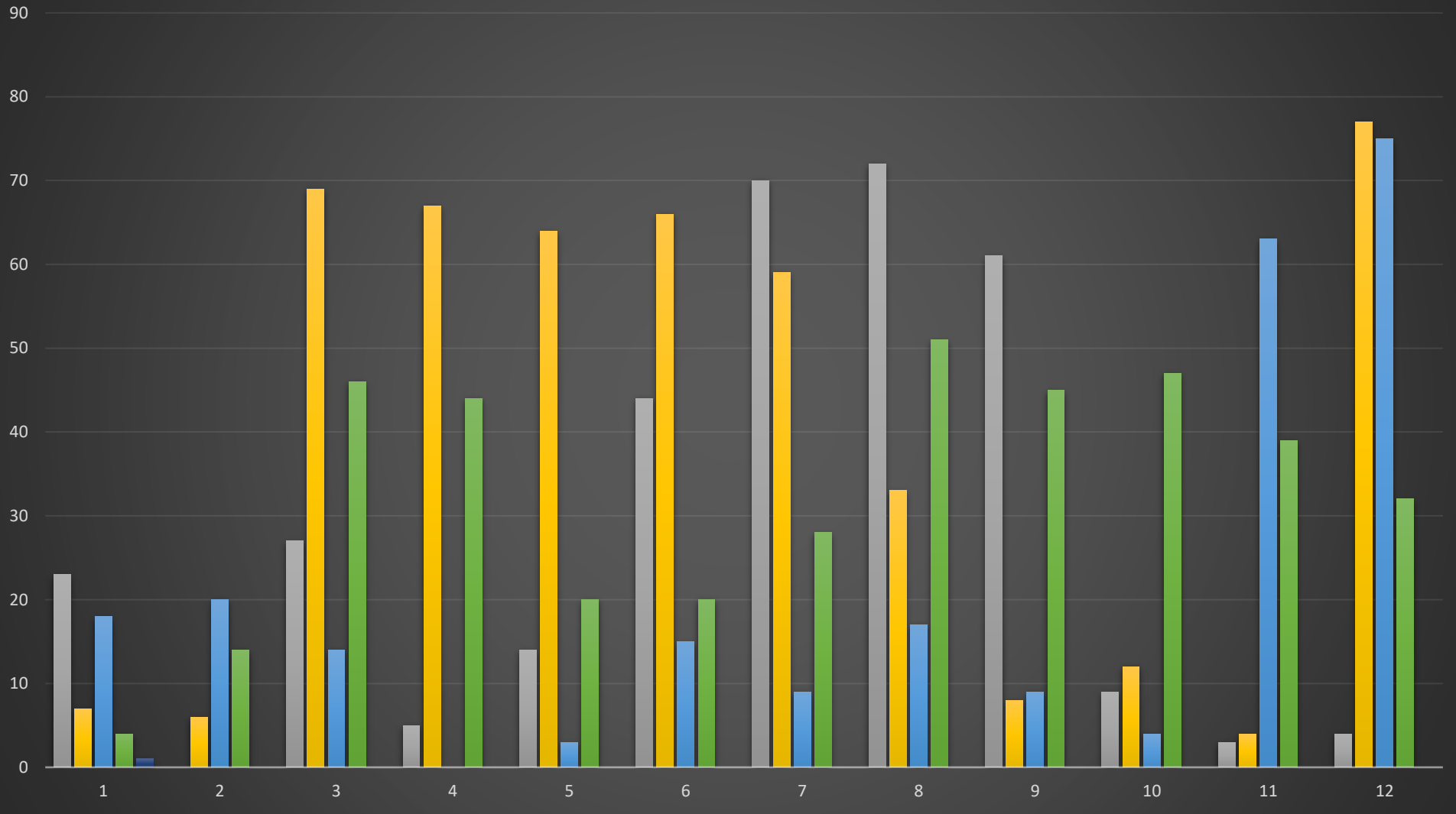
### Population 2010 - 1338

	January	February	March	April	May	June	July	August	September	October	November	December	Total
2010	0	0	0	1	0	0	0	0	0	0	0	1	2
2011	0	0	0	0	2	0	0	0	0	2	2	0	6
2012	0	1	1	1	1	3	1	4	0	1	1	1	15
2013	0	0	0	3	1	2	0	0	1	1	1	1	10
2014	0	0	0	0	0	0	0	0	0	0	0	0	0
2015	3	0	0	0	0	1	1	2	0	0	0	0	7
2016	0	0	0	0	0	1	0	1	2	0	0	0	4
2017	2	0	1	0	0	0	0	1	0	0	0	0	4
2018	0	2	1	0	3	9	3	1	3	0	1	0	23
2019	0	0	0	0	0	1	0	2	0	3	3	0	9
2020	23	0	27	5	14	44	70	72	61	9	3	4	332
2021	7	6	69	67	64	66	59	33	8	12	4	77	472
2022	18	20	14	0	3	15	9	17	9	4	63	75	247
2023	4	14	46	44	20	20	28	51	45	47	39	32	390
2024	27	21	11	35	14	4	8	2	0	0	0	0	122

### Fiscal Year

	October	November	December	January	February	March	April	May	June	July	August	September	Total
2010	0	0	0	0	0	0	1	0	0	0	0	0	1
2011	0	0	1	0	0	0	0	2	0	0	0	0	3
2012	2	2	0	0	1	1	1	1	3	1	4	0	16
2013	1	1	1	1	0	0	0	0	0	0	0	0	4
2014	0	0	0	0	0	0	0	0	0	0	0	0	0
2015	0	0	0	3	0	0	0	0	1	1	2	0	7
2016	0	0	0	0	0	0	0	0	1	0	1	2	4
2017	0	0	0	2	0	1	0	0	0	0	1	0	4
2018	0	1	0	0	2	1	0	3	9	3	1	3	23
2019	3	3	0	0	0	0	0	0	1	0	2	0	9
2020	0	0	0	23	0	27	5	14	44	70	72	61	316
2021	9	3	4	7	6	69	67	64	66	59	33	8	395
2022	12	2	77	18	20	14	0	3	15	9	17	9	196
2023	4	63	75	4	14	46	44	20	20	28	51	45	414
2024	47	39	32	27	21	11	35	14	4	8	2	0	240

# Single Family Residence Permits 2018-2024



■ 2020 ■ 2021 ■ 2022 ■ 2023 ■ 2024